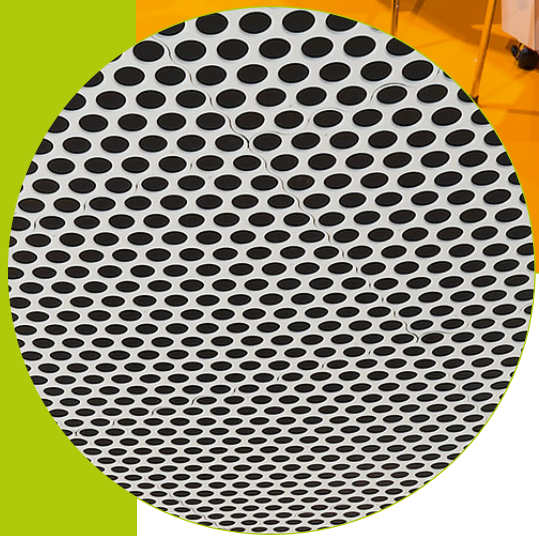




CEILING
LIGHTING
AMBIENCE



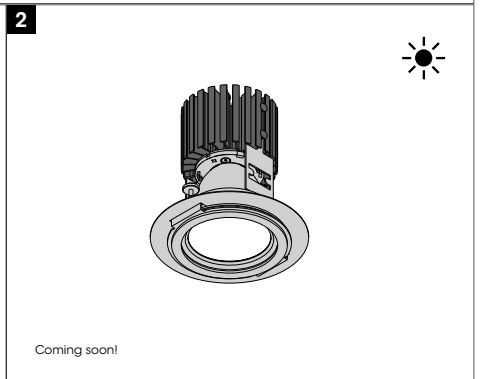
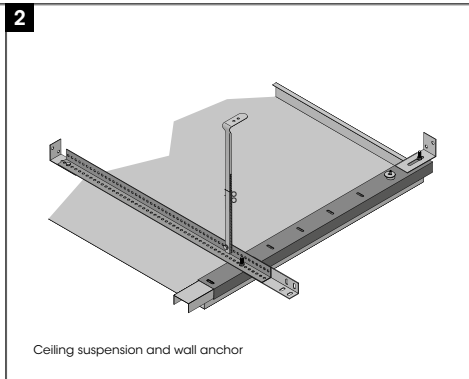
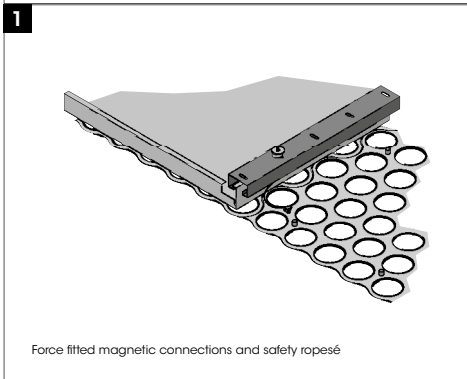
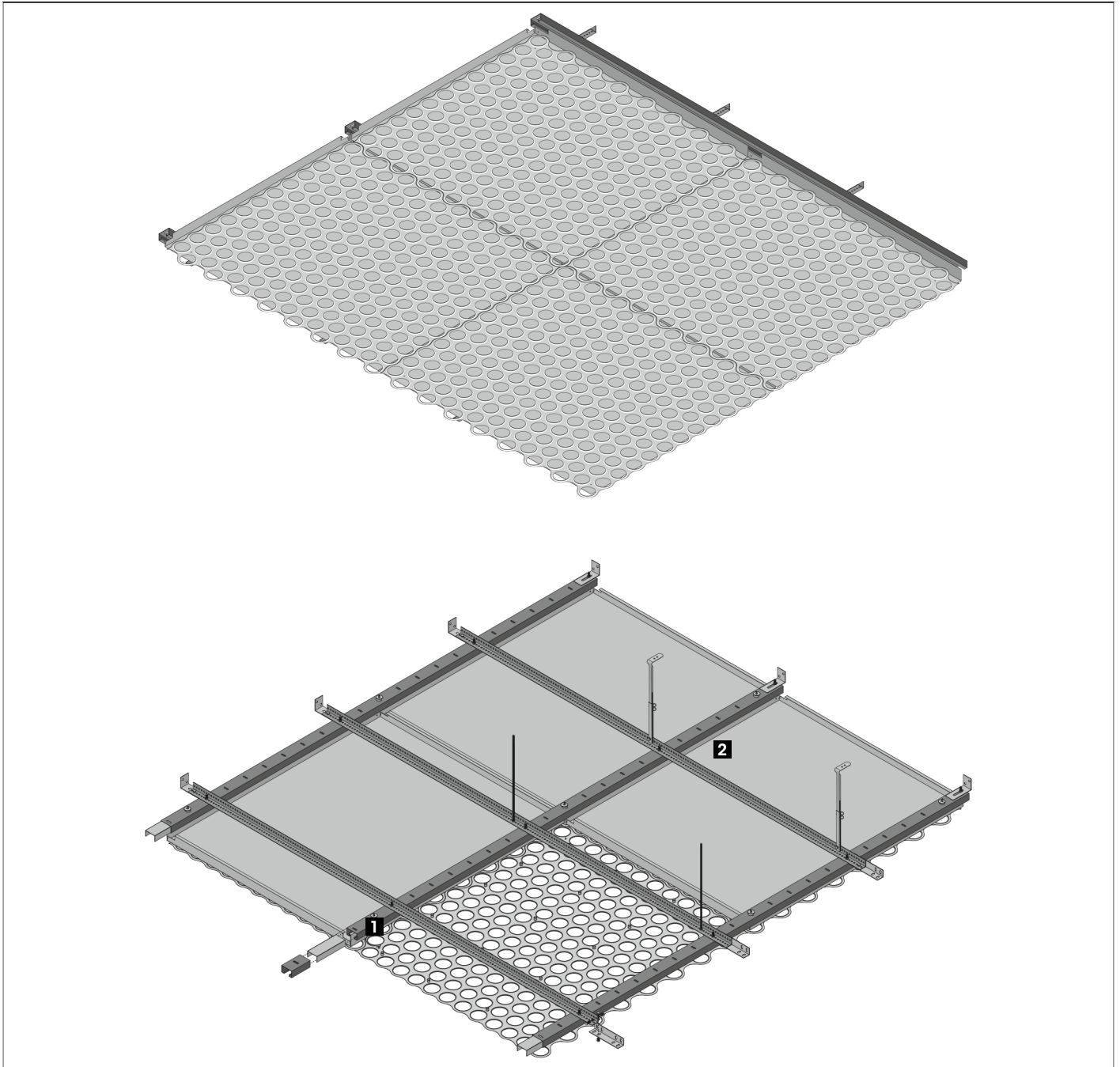
LOOP TYPE 3

DESIGN CEILING

PRODUCT DATA SHEET

DESIGN CEILING LOOP

MAGNETIC SYSTEM WITH CLOSED BACKING



MAGNETIC SYSTEM WITH CLOSED BACKING

The elegant metal ceiling LOOP TYPE3 stands out thanks to its characteristic design and to its high user comfort. The possibility to choose individually functions like acoustic and lighting allows multipurpose applications. The two-piece magnetic system creates a closed ceiling configuration with no visible fastening and can be easily removed. The possibility of choosing the colour of the false ceiling and the LOOP element create new designing dimensions. The metal ceiling contributes directly to Green Building / LEED certification. durlum LOOP TYPE3 metal ceilings fall under the general Master Format section 09 50 00 ceilings. When the LOOP TYPE3 ceiling panels are supplied perforated and with sound absorption materials, they could be more specifically listed under section 09 51 33 Acoustical Metal Pan Ceilings.

SURFACE

The LOOP TYPE3 elements made of 1/32" [1mm] thick sheet steel are available in any RAL colours. The false ceiling can be selected in the same shade or in another one.

DIMENSIONS

LOOP® Ceiling

Panel size: 3'-8 1/4" x 3'-3 17/32" [~1 124 mm x 1 004 mm]

Module size: 3'-7 29/32" x 3'-2 1/32" [~1 115 mm x 966 mm]

Joint width: 3/32" [2 mm]

S7 False ceiling

Panel size: 3'-7 29/32" x 3'-1 5/8" [1 115 mm x 956 mm]

Joint width: 13/32" [10 mm]

ACOUSTICS

LOOP TYPE3 is acoustically effective in the standard version due to the false ceiling [perforated rectangular metal panel in the system S7 KS].

MECHANICAL-ELECTRICAL

Next to lighting, other utilities such as ventilation, sprinklers or cable lines can also be integrated without any difficulties.

FIRE PERFORMANCE

In accordance with ASTM E84 Flame Spread Index for steel is 25 or less and Smoke Developed Index for steel is 50 or less.

GREEN BUILDING

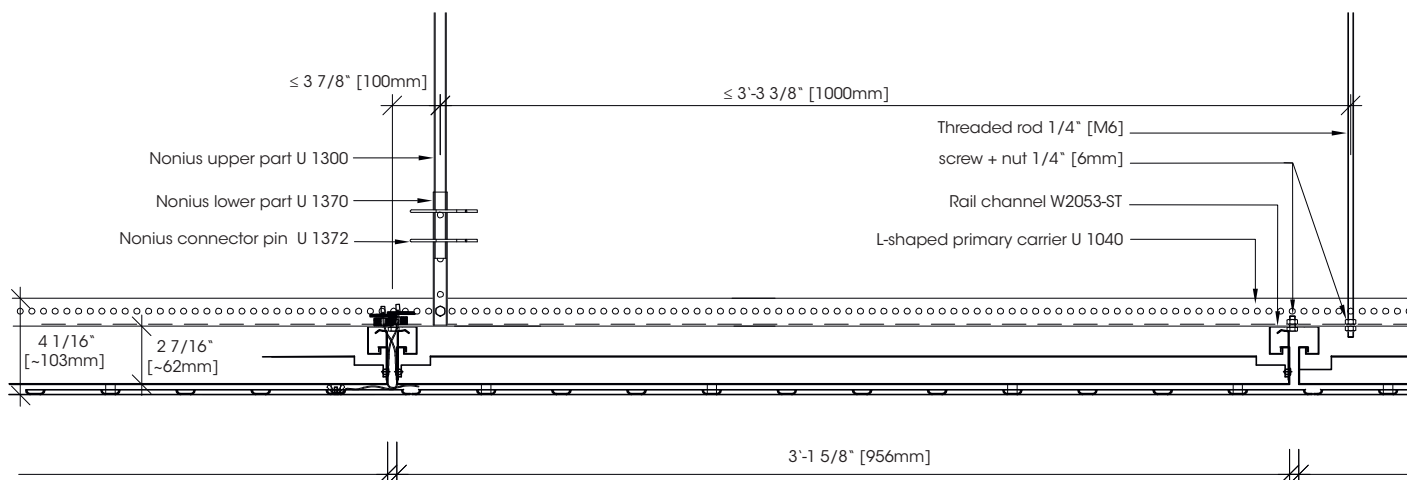
durlum metal panels contribute directly to LEED and other GREEN BUILDING certifications. Typically applicable credits under LEED v4:

- Recycled Content – post- & pre-consumer info
- VOC Emissions – conformity with VOC requirements
- Acoustic Performance – sound absorption with acoustic fleece
- Environmental Product Declaration – available

No substances as outlined in the US Living Building v.3 Red List are internationally used.

Learn more: greenbuilding@durlum.us

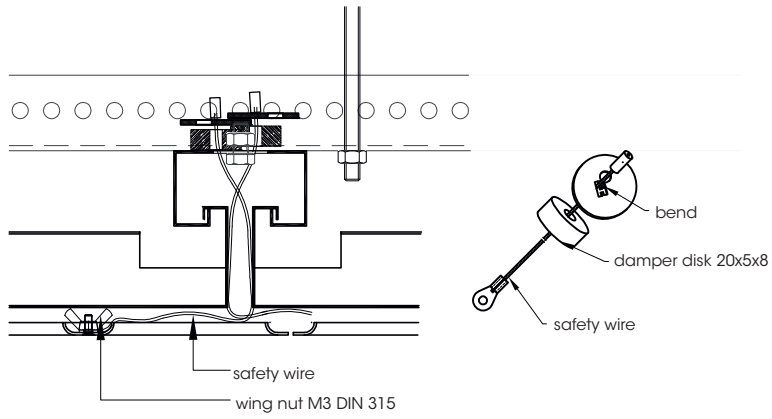
SYSTEM DETAILS



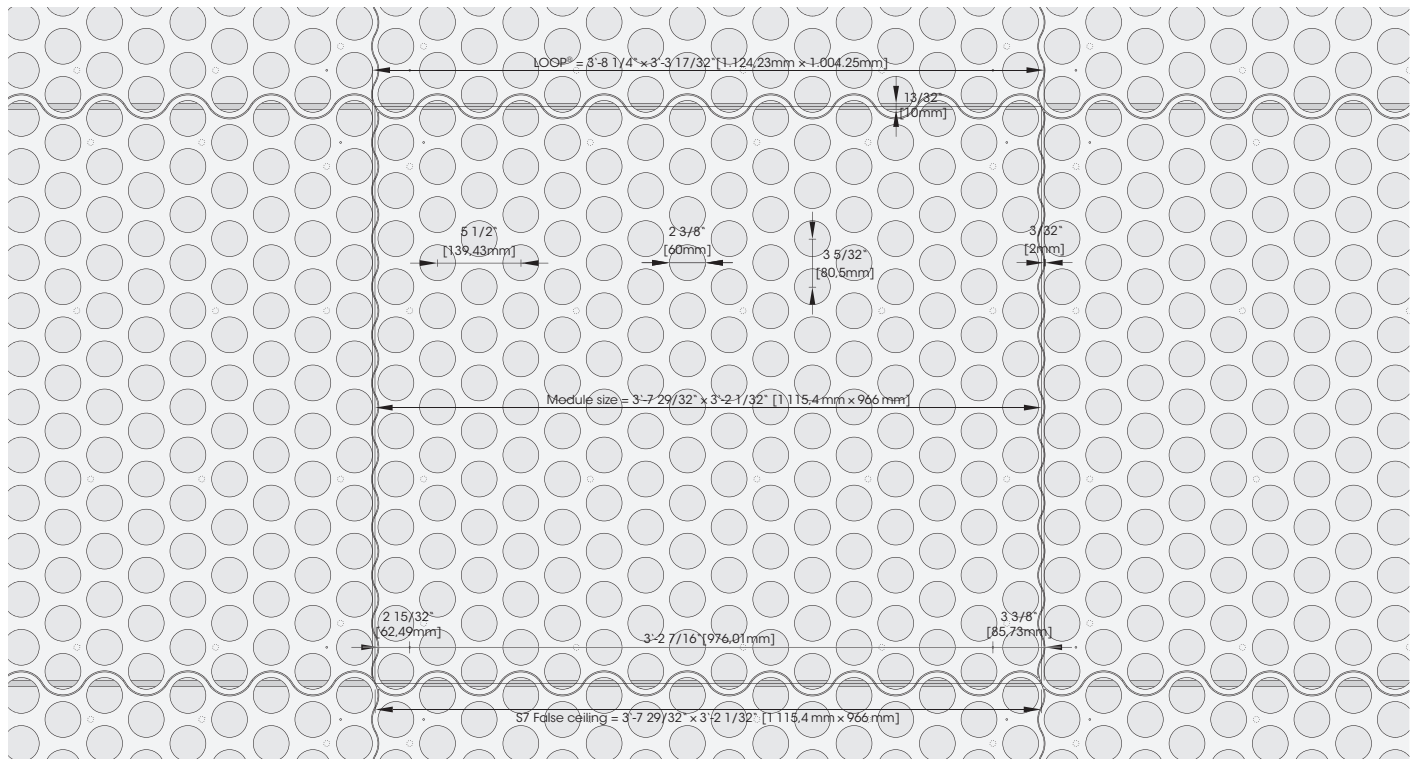
DESIGN CEILING LOOP

MAGNETIC SYSTEM WITH CLOSED BACKING

SYSTEM DETAIL



STANDARD MODULE



INSTALLATION

The ceiling elements are fitted on the rear side with bolts and magnets and force-fitted on a rectangular ceiling system suspended in rail channels in the S7 [KS] system. The rail channels are tightened by means of screws to L-shaped primary carriers.

The L-shaped primary carriers are used to enable lateral stiffening and are suspended to the structural slab using Nonius suspension elements or threaded rods. Fixing at the wall is performed by means of wall brackets [L-shaped primary carriers and rail channels].

A tool-free access to the ceiling void is possible. Security ropes prevent uncontrolled swinging down of the ceiling elements. The elements are installed using a floating method and can be moved using the joint for alignment.

Please note

Installation must be carried out by qualified and trained staff according to the instructions for installation. These are available as download at durlum.us.

TECHNICAL STANDARDS

The parts comply with DIN EN 13964 as well as ASTM C635 and ASTM E1264.

Production complies with the TAIM and CISCA guidelines and the durlum works standards and is quality controlled by the TÜV according to ISO 9001:2008 and ISO 14001:2004.

CLEANING

As standard, durlum ceiling panels are made with an electrostatic polyester powder coating, thus providing them with a long-term finish. The powder-coated surface should always be cleaned wearing clean gloves. First clean it with a soft, dry cloth. If dirt cannot be removed by this procedure, the cloth can also be moistened, with the addition of a pH-neutral cleaner [household detergent], if necessary. Contact of the powder coating with both alkaline and acid substances must be avoided. Metallic powder coatings show a particularly sensitive reaction. Due to the risk of a change in hue or effect, for metallic coatings a suitability test must be performed.

More information: durlum.us

MANUFACTURER



durlum GmbH
An der Wiese 5
79650 Schopfheim
Germany

P: +49.7622.3905.0
E: info@durlum.com
I: durlum.com

CONTACT



durlum USA LLC
251 Little Falls Drive
Wilmington
Delaware 19808
USA

P: 1.800.204.3830
E: infoUSA@durlum.com
I: durlum.us