





dur-GRAPHICS

The dur-GRAPHICS printing technology by durlum gives creative possibilities to customize the metal ceilings and area lightings individually. Textures, motives or inscriptions – dur-GRAPHICS create architectural accents.

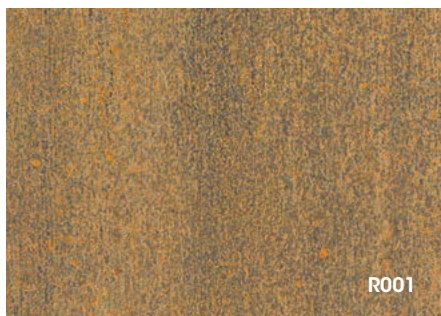
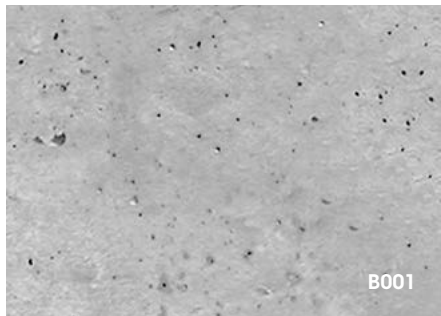
dur-GRAPHICS

IMPRINTED SURFACES





Whitewashed oak



B001 Concrete
R001 Rust
W150 Beech

W160 Teak
W170 Oak
W200 Walnut

W210 Cherry
W220 Spruce
W230 Grey oak

dur-GRAPHICS gives you unprecedented individual design freedom for metal ceilings and surface lighting. Thus, different textures, patterns, images or inscriptions can be printed to create an individual character for your ceiling.

We use optimal templates to get the best possible printing results. For individual motifs or textures, please note that ceilings are observed from a certain distance. Therefore, very fine textures cannot be distinguished from a certain distance and appear as a solid colored surface.

CUSTOM DESIGN

Realistic, decorative or functional – there are numerous motifs for a metal ceiling or a lighting surface. Our prints are adapted to the indoor zone and may be covered on request with a protecting lacquer. Create a special room like no other!

DUROPLAN DESIGNS

With a durlum texture printing, you can create a special atmosphere in the room. Our textures library comprises pictures of often used materials like wood or concrete. Of course, if you want a special texture, we can print it as well.

DIMENSIONS

Maximum print area: 125.98" x 78.74" [3 200x2 000mm]
Maximum material thickness: 1.97" [50mm]

PRINTABLE MATERIAL

Metal, glass, plastic and luminaire cover DUROSATIN®

PRINT QUALITY

Printing ink
CMYK+white [optional]

Fine Art: 600x900 dpi
Good resolution for small print runs to photographic standards to the highest levels of detail and with extremely subtle color graduations.

Production: 400x400 dpi
Good resolution for high print runs with full-surface motifs and middle to high level of detail.

PRINTING DATA

Vector graphics
Loss-free scalable graphics, ideal for graphic motives like logos, etc.
Data formats: pdf, ai, eps, dwg, svg

Pixel graphics
Images scalable with loss of quality, ideal for photorealistic motives.
Optimal resolution: end format with 300 dpi
Data formats: psd, tiff, jpg

[For further information please refer to durlum.us](https://durlum.us)